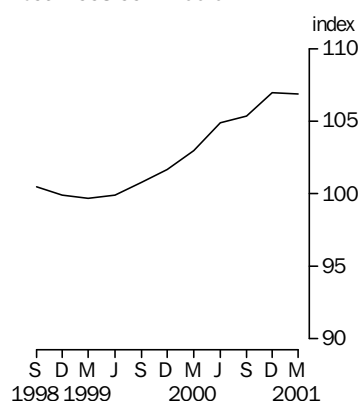


STAGE OF PRODUCTION PRODUCER PRICE INDEXES AUSTRALIA

EMBARGO: 11.30AM (CANBERRA TIME) FRI 20 APR 2001

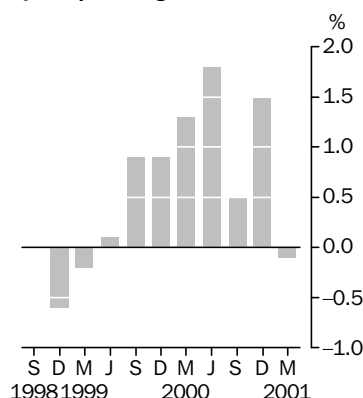
Final Stage

Base: 1998-99 = 100.0



Final Stage

Quarterly % change



- For further information about these and related statistics, contact the National Information Service on 1300 135 070 or Lee Taylor on Canberra 02 6252 8100.

MARCH QTR KEY FIGURES

STAGE OF PRODUCTION	% change Dec Qtr 2000 to Mar Qtr 2001	% change Mar Qtr 2000 to Mar Qtr 2001
Final (Stage 3) commodities (excl exports)	-0.1	3.8
Domestic	0.1	2.5
Imports	-1.3	9.5
Intermediate (Stage 2) commodities	-1.6	5.3
Domestic	-1.0	4.3
Imports	-5.3	11.8
Preliminary (Stage 1) commodities	-2.6	6.0
Domestic	-1.9	4.9
Imports	-6.8	13.1

MARCH QTR KEY POINTS

FINAL (STAGE 3) COMMODITIES

- The Final (Stage 3) index fell by 0.1% in the March quarter due mostly to falls in the prices of imported commodities.
- The Domestic Final stage index rose 0.1%, with price increases for meat products offset by price decreases for petroleum products.
- The Final (Stage 3) Imports index fell 1.3%, driven by falls in the price of commodities across most industries, particularly in petroleum products and machinery & equipment.

FINAL ISSUE
See page 2
for details.

INTERMEDIATE (STAGE 2) COMMODITIES

- The Intermediate (Stage 2) index fell by 1.6% in the March quarter, due to falls in the prices of both domestically produced and imported commodities.
- The Intermediate (Stage 2) Imports index fell 5.3%, mainly due to falls in the prices of crude oil and petroleum products.
- The Domestic component of the Intermediate (Stage 2) index fell 1.0%, mainly due to price falls in crude oil and petroleum products.

PRELIMINARY (STAGE 1) COMMODITIES

- The Preliminary (Stage 1) index fell by 2.6% in the March quarter due to falls in the prices of both domestic and imported components.
- The imported component of the Preliminary (Stage 1) index fell by 6.8%, mostly as a result of the fall in crude oil prices.
- The Preliminary (Stage 1) Domestic index fell by 1.9%, largely due to falls in the prices of crude oil and business services.

NOTES

LAST ISSUE

This issue will be the last of this publication. The ABS has reviewed its publication strategy for producer price indexes with a view to integrating its range of publications. From June quarter 2001 the key series will be published in a new publication -- *Producer Price Indexes, Australia* (Cat. no. 6427.0). Subscribers of this publication will be sent details of the new publication and information on arrangements for ensuring that they will continue to receive the series that they are interested in. Others who are interested in receiving details of the new publication should contact Lee Taylor on 1800 155 106.

CHANGES IN THIS ISSUE

The index used to price house construction, which was previously lagged a quarter, is now available on a current quarter basis. Consequently the current quarter movements of this series will be used in the compilation of the Stage of Production (SOP) index from March quarter 2001 onwards. The historical SOP series will remain unchanged, in line with ABS policy of not revising price indexes. The impact of this change in methodology on the SOP series is negligible.

RELATED STATISTICS

For more information about statistics in this publication and the availability of related unpublished statistics, contact Lee Taylor on fax (02) 6252 7060, or email lee.taylor@abs.gov.au

.....

ABBREVIATIONS

ANZSIC Australian and New Zealand Standard Industrial Classification
c.i.f. cost, insurance and freight
f.o.b. free on board
n.e.c. not elsewhere classified

Dennis Trewin
Australian Statistician

INDEX NUMBERS (a), by Stage and Source

	PRELIMINARY			INTERMEDIATE			FINAL(b)		
<i>Period</i>	<i>Domestic</i>	<i>Imports</i>	<i>Total</i>	<i>Domestic</i>	<i>Imports</i>	<i>Total</i>	<i>Domestic</i>	<i>Imports</i>	<i>Total</i>
1998-99	100.0	100.0	100.0	100.0	100.0	100.0	100.0	100.0	100.0
1999-00	104.1	107.1	104.5	103.4	104.4	103.6	104.3	95.7	102.6
1998									
September	100.9	103.3	101.2	100.6	102.8	100.9	99.7	103.5	100.5
December	100.2	101.0	100.3	100.0	101.2	100.2	99.5	101.7	99.9
1999									
March	98.7	97.6	98.6	99.3	98.4	99.2	99.9	99.2	99.7
June	100.2	98.2	99.9	100.1	97.6	99.8	100.9	95.6	99.9
September	102.1	100.1	101.8	101.5	99.1	101.2	102.4	94.2	100.8
December	103.4	103.6	103.4	102.7	101.9	102.6	103.3	95.0	101.7
2000									
March	104.1	108.6	104.7	103.7	105.1	103.9	105.0	94.7	103.0
June	106.9	116.2	108.2	105.7	111.6	106.5	106.4	98.9	104.9
September	109.2	121.0	110.8	107.5	114.4	108.4	106.8	99.5	105.4
December	111.3	131.7	114.0	109.3	124.1	111.2	107.5	105.1	107.0
2001									
March	109.2	122.8	111.0	108.2	117.5	109.4	107.6	103.7	106.9

(a) Base of each index: 1998-99=100.0.

(b) Excluding Exports.

PERCENTAGE CHANGE, by Stage and Source

	PRELIMINARY			INTERMEDIATE			FINAL(a)		
<i>Period</i>	<i>Domestic</i>	<i>Imports</i>	<i>Total</i>	<i>Domestic</i>	<i>Imports</i>	<i>Total</i>	<i>Domestic</i>	<i>Imports</i>	<i>Total</i>
PERCENTAGE CHANGE FROM PREVIOUS YEAR									
1998-99
1999-00	4.1	7.1	4.5	3.4	4.4	3.6	4.3	-4.3	2.6
PERCENTAGE CHANGE FROM PREVIOUS PERIOD									
1998									
September
December	-0.7	-2.2	-0.9	-0.6	-1.6	-0.7	-0.2	-1.7	-0.6
1999									
March	-1.5	-3.4	-1.7	-0.7	-2.8	-1.0	0.4	-2.5	-0.2
June	1.5	0.6	1.3	0.8	-0.8	0.6	1.0	-3.6	0.2
September	1.9	1.9	1.9	1.4	1.5	1.4	1.5	-1.5	0.9
December	1.3	3.5	1.6	1.2	2.8	1.4	0.9	0.8	0.9
2000									
March	0.7	4.8	1.3	1.0	3.1	1.3	1.6	-0.3	1.3
June	2.7	7.0	3.3	1.9	6.2	2.5	1.3	4.4	1.8
September	2.2	4.1	2.4	1.7	2.5	1.8	0.4	0.6	0.5
December	1.9	8.8	2.9	1.7	8.5	2.6	0.7	5.6	1.5
2001									
March	-1.9	-6.8	-2.6	-1.0	-5.3	-1.6	0.1	-1.3	-0.1
PERCENTAGE CHANGE FROM CORRESPONDING PERIOD OF PREVIOUS YEAR									
1998									
September
December
1999									
March
June
September	1.2	-3.1	0.6	0.9	-3.6	0.3	2.7	-9.0	0.3
December	3.2	2.6	3.1	2.7	0.7	2.4	3.8	-6.6	1.8
2000									
March	5.5	11.3	6.2	4.4	6.8	4.7	5.1	-4.5	3.3
June	6.7	18.3	8.3	5.6	14.3	6.7	5.5	3.5	5.0
September	7.0	20.9	8.8	5.9	15.4	7.1	4.3	5.6	4.6
December	7.6	27.1	10.3	6.4	21.8	8.4	4.1	10.6	5.2
2001									
March	4.9	13.1	6.0	4.3	11.8	5.3	2.5	9.5	3.8

.. not applicable

(a) Excluding exports.

INDEX NUMBERS (a), Final Commodities—by Source & Destination

	DOMESTIC(b)			IMPORTS			TOTAL(b)		
<i>Period</i>	<i>Consumer</i>	<i>Capital</i>	<i>Total</i>	<i>Consumer</i>	<i>Capital</i>	<i>Total</i>	<i>Consumer</i>	<i>Capital</i>	<i>Total</i>
1998–99	100.0	100.0	100.0	100.0	100.0	100.0	100.0	100.0	100.0
1999–00	103.6	104.9	104.3	96.6	94.6	95.7	102.2	103.0	102.6
1998									
September	100.5	98.9	99.7	102.9	104.1	103.5	101.0	99.9	100.5
December	99.6	99.4	99.5	101.2	102.2	101.7	99.9	99.9	99.9
1999									
March	99.6	100.1	99.9	99.1	99.4	99.2	99.5	99.9	99.7
June	100.2	101.6	100.9	96.7	94.4	95.6	99.5	100.3	99.9
September	102.2	102.5	102.4	95.2	93.2	94.2	100.8	100.8	100.8
December	102.6	104.1	103.3	95.8	94.0	95.0	101.2	102.2	101.7
2000									
March	104.0	105.9	105.0	95.8	93.4	94.7	102.4	103.6	103.0
June	105.7	107.1	106.4	99.7	97.9	98.9	104.5	105.3	104.9
September	106.2	107.4	106.8	101.4	97.3	99.5	105.3	105.5	105.4
December	106.7	108.3	107.5	106.6	103.3	105.1	106.7	107.4	107.0
2001									
March	106.8	108.5	107.6	105.1	102.1	103.7	106.5	107.3	106.9

(a) Base of each index: 1998-99=100.0.

(b) Excluding exports.

PERCENTAGE CHANGE, Final Commodities—by Source & Destination

	DOMESTIC(a)			IMPORTS			TOTAL(a)		
	Consumer	Capital	Total	Consumer	Capital	Total	Consumer	Capital	Total
PERCENTAGE CHANGE FROM PREVIOUS YEAR									
1998–99
1999–00	3.6	4.9	4.3	–3.4	–5.4	–4.3	2.2	3.0	2.6
PERCENTAGE CHANGE FROM PREVIOUS PERIOD									
1998									
September
December	–0.9	0.5	–0.2	–1.7	–1.8	–1.7	–1.1	—	–0.6
1999									
March	—	0.7	0.4	–2.1	–2.7	–2.5	–0.4	—	–0.2
June	0.6	1.5	1.0	–2.4	–5.0	–3.6	—	0.4	0.2
September	2.0	0.9	1.5	–1.6	–1.3	–1.5	1.3	0.5	0.9
December	0.4	1.6	0.9	0.6	0.9	0.8	0.4	1.4	0.9
2000									
March	1.4	1.7	1.6	—	–0.6	–0.3	1.2	1.4	1.3
June	1.6	1.1	1.3	4.1	4.8	4.4	2.1	1.6	1.8
September	0.5	0.3	0.4	1.7	–0.6	0.6	0.8	0.2	0.5
December	0.5	0.8	0.7	5.1	6.2	5.6	1.3	1.8	1.5
2001									
March	0.1	0.2	0.1	–1.4	–1.2	–1.3	–0.2	–0.1	–0.1
PERCENTAGE CHANGE FROM CORRESPONDING PERIOD OF PREVIOUS YEAR									
1998									
September
December
1999									
March
June
September	1.7	3.6	2.7	–7.5	–10.5	–9.0	–0.2	0.9	0.3
December	3.0	4.7	3.8	–5.3	–8.0	–6.6	1.3	2.3	1.8
2000									
March	4.4	5.8	5.1	–3.3	–6.0	–4.5	2.9	3.7	3.3
June	5.5	5.4	5.5	3.1	3.7	3.5	5.0	5.0	5.0
September	3.9	4.8	4.3	6.5	4.4	5.6	4.5	4.7	4.6
December	4.0	4.0	4.1	11.3	9.9	10.6	5.4	5.1	5.2
2001									
March	2.7	2.5	2.5	9.7	9.3	9.5	4.0	3.6	3.8

.. not applicable

— nil or rounded to zero (including null cells)

(a) Excluding exports.

INDEX NUMBERS (a), Final Commodities—by Source & Destination: Including Exports

	DOMESTIC				IMPORTS			TOTAL		
<i>Period</i>	<i>Consumer</i>	<i>Capital</i>	<i>Exports</i>	<i>Total (incl. exports)</i>	<i>Consumer</i>	<i>Capital</i>	<i>Total</i>	<i>Consumer</i>	<i>Capital</i>	<i>Total (incl. exports)</i>
1998-99	100.0	100.0	100.0	100.0	100.0	100.0	100.0	100.0	100.0	100.0
1999-00	103.6	104.9	103.4	104.0	96.6	94.6	95.7	102.2	103.0	102.8
1998										
September	100.5	98.9	105.2	101.3	102.9	104.1	103.5	101.0	99.9	101.6
December	99.6	99.4	100.8	99.9	101.2	102.2	101.7	99.9	99.9	100.1
1999										
March	99.6	100.1	98.0	99.3	99.1	99.4	99.2	99.5	99.9	99.3
June	100.2	101.6	96.0	99.5	96.7	94.4	95.6	99.5	100.3	98.9
September	102.2	102.5	96.9	100.8	95.2	93.2	94.2	100.8	100.8	99.8
December	102.6	104.1	101.0	102.7	95.8	94.0	95.0	101.2	102.2	101.5
2000										
March	104.0	105.9	105.0	105.0	95.8	93.4	94.7	102.4	103.6	103.5
June	105.7	107.1	110.7	107.6	99.7	97.9	98.9	104.5	105.3	106.3
September	106.2	107.4	112.6	108.5	101.4	97.3	99.5	105.3	105.5	107.1
December	106.7	108.3	119.7	111.0	106.6	103.3	105.1	106.7	107.4	110.1
2001										
March	106.8	108.5	119.4	111.0	105.1	102.1	103.7	106.5	107.3	109.9

(a) Base of each index: 1998-99=100.0.

PERCENTAGE CHANGE, Final Commodities—by Source & Destination: Including Exports

Period	DOMESTIC				IMPORTS			TOTAL		
	Consumer	Capital	Exports	Total (incl. exports)	Consumer	Capital	Total	Consumer	Capital	Total (incl. exports)
	PERCENTAGE CHANGE FROM PREVIOUS YEAR									
1998-99
1999-00	3.6	4.9	3.4	4.0	-3.4	-5.4	-4.3	2.2	3.0	2.8
Period	PERCENTAGE CHANGE FROM PREVIOUS PERIOD									
	Consumer	Capital	Exports	Total (incl. exports)	Consumer	Capital	Total	Consumer	Capital	Total (incl. exports)
	PERCENTAGE CHANGE FROM PREVIOUS PERIOD									
1998										
September
December	-0.9	0.5	-4.4	-1.4	-1.7	-1.9	-1.8	-1.1	—	-1.5
1999										
March	—	0.7	-2.8	-0.6	-2.1	-2.8	-2.5	-0.4	—	-0.8
June	0.6	1.5	-2.0	0.2	-2.4	-5.0	-3.6	—	0.4	-0.4
September	2.0	0.9	0.9	1.3	-1.5	-1.2	-1.4	1.3	0.5	0.9
December	0.4	1.6	4.1	1.9	0.6	0.8	0.8	0.4	1.4	1.7
2000										
March	1.4	1.8	4.0	2.3	—	-0.6	-0.3	1.2	1.4	2.0
June	1.7	1.2	5.7	2.6	3.9	4.5	4.2	2.1	1.7	2.8
September	0.5	0.3	1.9	0.9	1.7	-0.6	0.6	0.8	0.2	0.8
December	0.5	0.9	7.1	2.5	5.2	6.0	5.6	1.4	1.9	3.0
2001										
March	0.1	0.2	-0.3	—	-1.5	-1.2	-1.4	-0.2	-0.1	-0.2
Period	PERCENTAGE CHANGE FROM CORRESPONDING PERIOD OF PREVIOUS YEAR									
	Consumer	Capital	Exports	Total (incl. exports)	Consumer	Capital	Total	Consumer	Capital	Total (incl. exports)
	PERCENTAGE CHANGE FROM CORRESPONDING PERIOD OF PREVIOUS YEAR									
1998										
September
December
1999										
March
June
September	1.7	3.6	-8.3	-0.5	-7.7	-10.9	-9.3	-0.2	0.9	-1.8
December	3.0	4.7	0.2	2.8	-5.4	-8.2	-6.7	1.3	2.3	1.4
2000										
March	4.4	5.8	7.0	5.7	-3.3	-6.0	-4.5	2.9	3.7	4.2
June	5.5	5.5	14.7	8.1	3.0	3.5	3.3	5.0	5.0	7.4
September	4.0	4.9	15.7	7.7	6.2	4.1	5.3	4.5	4.7	7.3
December	4.1	4.2	18.7	8.3	10.8	9.3	10.1	5.5	5.2	8.6
2001										
March	2.8	2.6	14.4	6.0	9.3	8.7	9.0	4.1	3.7	6.4

.. not applicable

— nil or rounded to zero (including null cells)

EXPLANATORY NOTES

INTRODUCTION

1 This publication presents producer price index numbers for the supply of commodities to the Australian economy in a "stage of production" (SOP) framework. As such, the indexes cover both domestically produced and imported commodities, individually and in aggregate. They represent an alternative arrangement of largely existing ABS producer price index series. The indexes are calculated on the reference base 1998-99 = 100.0.

2 These indexes are compiled within the statistical framework outlined in the 1997 *ABS Information Paper: An Analytical Framework for Price Indexes in Australia* (Cat. no. 6421.0) and are designed to support the study of inflation.

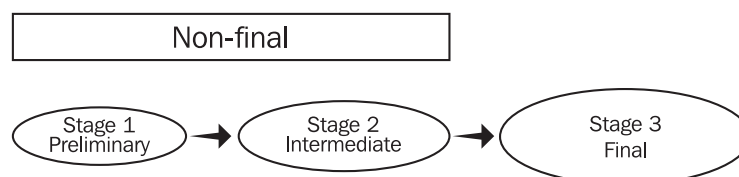
3 A more detailed explanation of the SOP concept than that provided in this publication is contained in the *ABS Information Paper: Producer Price Index Developments* (Cat. no. 6422.0), released on 25 March 1999. The index numbers in this current publication cannot be directly compared with the experimental index numbers in the Information Paper because:

- the coverage of the series has been expanded to include selected service and construction industries (see paragraphs 14 and 15); and
- the weighting patterns of the indexes have been updated to 1994-95 and the reference base of the indexes has been updated to 1998-99 = 100.0.

THE SOP CONCEPT

4 The indexes are compiled using the SOP concept. Under this concept flows of commodities are categorised according to their economic destination on a sequential basis along the production chain. The basis for the categorisation is the Australian Input-Output tables (1994-95). The primary categorisation is between final commodities (i.e. commodities destined for final consumption, capital formation or export) and non-final commodities (i.e. commodities that flow into intermediate consumption for further processing).

5 This initial breakdown of the commodity flows into final and non-final represents a useful economic dissection of producers' transactions. However, the non-final commodities can flow into the production of both final and other non-final commodities. Therefore, to aid analysis, the non-final commodity flows have been divided on a sequential basis between Stage 1 (or preliminary) commodities and Stage 2 (or intermediate) commodities as illustrated below. This approach results in three separate stages of production.



6 In order to avoid multiple counting of transactions, the three stages are not aggregated.

7 Under this framework, preliminary (Stage 1) commodities are used in the production of intermediate (Stage 2) commodities; in turn intermediate (Stage 2) commodities flow into the production of final (Stage 3) commodities.

8 The framework allows for analyses of price change as commodities flow through production processes. Price changes for earlier stages of production may be indicators of possible future price changes for later stages.

TRANSACTION FLOW APPROACH

9 The ABS has adopted a transaction flow approach in disaggregating commodity supply into the various production stages. This approach means that

EXPLANATORY NOTES *continued*

TRANSACTION FLOW APPROACH *continued*

the assignment of a commodity to a stage is based on the proximity of its use in final demand.

10 Alternative *degree of fabrication* or *principal destination* approaches are employed by statistical agencies in some other countries. These approaches result in the allocation of particular commodities to one, and only one, stage. This would present particular problems for Australia due to the openness of the economy, with exports (and imports) equivalent to about 20% of gross domestic product. Commodities such as wheat, wool, and iron ore are exported in large volumes as well as being further processed locally. The allocation of such commodities to a single stage would, by necessity, be very arbitrary.

11 Adopting the transaction flow approach means, for example, that exported wheat and domestically used wheat are treated as different commodities for index construction purposes. Under this approach commodity transactions can therefore be allocated to more than one stage. Exported wheat is treated as a Final (Stage 3) commodity while wheat used domestically to make the flour used in bread production is considered to be a Preliminary (Stage 1) commodity. Similarly, commodities such as energy and containers appear under all three categories.

SCOPE AND COVERAGE

12 Producer price indexes conventionally relate to the output of domestic industries, at basic prices, either inclusive or exclusive of exports. As the main focus is on domestic inflation, exports are excluded from the "headline" series, "Final (Stage 3) commodities", as presented in the key figures on the front page and in Tables 1, 2, 3 and 4. Tables 5 and 6 present index series for Final (Stage 3) commodities *including* exports.

13 Imports have also been incorporated within the framework, recognising that they represent an important potential source of inflationary pressures.

Services

14 In concept, the SOP indexes incorporate all flows of goods and services. However, there are limitations on the availability of price indexes for services. Price indexes are available for most Transport and Storage Services (Division I of ANZSIC) and Property and Business Services (Division L of ANZSIC). Accordingly, indexes for these services have been included in the SOP framework. However price series for most Final (Stage 3) consumer services are not currently available on a sufficiently timely basis to allow for their inclusion in the indexes. This has the effect of decreasing the apparent relative weight of consumer items versus capital items in the final stage. It is intended to introduce additional services price series as they become available, along with the consequential weight changes.

Construction

15 There are similar limitations on the availability of price indexes for Construction (Division E of ANZSIC). Being capital in nature, construction contributes to the Final (Stage 3) index only. Index coverage is currently limited to the output of the following ANZSIC classes:

- 4111 House construction;
- 4112 Residential building construction n.e.c.;
- 4113 Non-residential building construction;
- 4121 Road and bridge construction.

16 As with services, it is intended to introduce further construction price series as they become available.

COMPOSITION AND WEIGHTS

17 The indexes are fixed weights indexes. The items included in the indexes reflect the values of commodity flows, for both domestic supply and imports,

EXPLANATORY NOTES *continued*

COMPOSITION AND WEIGHTS

continued

allocated to stages based on an analysis of detailed 1994-95 Input-Output tables. The index structures and weighting patterns for the SOP indexes are shown in the June quarter issue of this publication.

PRICE SERIES

18 The component price series used in compiling the SOP indexes are sourced from other ABS price indexes as follows:

- Domestically produced series are sourced from: Price Indexes of Articles Produced by Manufacturing Industries; Price Indexes of Materials Used in Manufacturing Industries; Export Price Index; Consumer Price Index; and Producer Price Indexes for Selected Service Industries.
- Imported series are sourced from the Import Price Index.

PRICING BASIS

19 In concept the valuation basis of the SOP indexes is basic prices, i.e. prior to the imposition of indirect taxes (less subsidies) on products and any transport and trade margins. However, the use of component series from existing ABS price collections in some cases results in the pricing basis diverging from this ideal. For example, imports are priced on an f.o.b. basis, not c.i.f. (which approximates basic prices).

INDEX NUMBERS

20 Index numbers for financial years are simple averages of the relevant quarterly index numbers.

ANALYSIS OF INDEX CHANGES

21 Care should be exercised when interpreting quarter-to-quarter movements in the indexes as short-term movements do not necessarily indicate changes in trend.

COMPARISONS WITH CONSUMER PRICE INDEX

22 Final (Stage 3) indexes are presented for consumer commodities. It should be noted that this index is not directly comparable with the Consumer Price Index. The two indexes differ significantly in concept and coverage. The major differences are:

- the pricing basis for the Final (Stage 3) consumer index is basic prices (see paragraph 19 above). The Consumer Price Index, however, measures changes in purchasers' prices, i.e. the actual retail prices paid by households for products, inclusive of taxes on products, such as the GST, and any transport and trade margins.
- the coverage of the two indexes differs. Currently the Final (Stage 3) consumer index mainly measures changes in the prices of goods; i.e. most services are currently excluded from the index. The CPI covers both goods and services.
- the indexes have different weighting bases. The weighting pattern for the Final (Stage 3) consumer index is based on the 1994-5 Input-Output tables, while the Consumer Price Index weighting pattern is based on the 1998-99 Household Expenditure Survey.

FURTHER INFORMATION

23 Further information on recent price index developments in the ABS is presented in the following publications:

- *An Analytical Framework for Price Indexes in Australia* (Cat. no. 6421.0)
- *Producer Price Index Developments* (Cat. no. 6422.0) (Comprises detailed discussion of Stage of Production concept and detail of selected Service Industries indexes.)
- *Review of the Import Price Index and Export Price Index, Australia* (Cat. no. 6424.0)
- *Price Indexes and The New Tax System* (Cat. no. 6425.0)

RELATED PUBLICATIONS

24 Users may also wish to refer to the following Producer Price Index publications, which are available from ABS bookshops:

EXPLANATORY NOTES *continued*

RELATED PUBLICATIONS

continued

- *Export Price Index, Australia* (Cat. no. 6405.0)
- *Import Price Index, Australia* (Cat. no. 6414.0)
- *Price Index of Materials Used in Building Other than House Building, Six State Capital Cities* (Cat. no. 6407.0)
- *Price Index of Materials Used in House Building, Six State Capital Cities* (Cat. no. 6408.0)
- *Price Index of Copper Materials, Australia* (Cat. no. 6410.0)
- *Price Indexes of Materials Used in Manufacturing Industries, Australia* (Cat. no. 6411.0)
- *Price Indexes of Materials Used in Coal Mining, Australia* (Cat. no. 6415.0)
- *Price Indexes of Articles Produced by Manufacturing Industry, Australia* (Cat. no. 6412.0)
- *Producer Price Indexes for Selected Service Industries, Australia* (Cat. no. 6423.0)

25 Other ABS publications which may be of interest include:

- *Balance of Payments and International Investment Position, Australia* (Cat. no. 5302.0)
- *Consumer Price Index, Australia* (Cat. no. 6401.0)
- *Wage Cost Index, Australia* (Cat. no. 6345.0)
- *Average Weekly Earnings, States and Australia* (Cat. no. 6302.0)
- *Australian National Accounts: Input-Output Tables* (Cat. no. 5209.0)

26 Current publications produced by the ABS are listed in the *Catalogue of Publications and Products, Australia* (Cat. no. 1101.0). The ABS also issues, on Tuesdays and Fridays, a *Release Advice* (Cat. no. 1105.0) which lists publications to be released in the next few days. The Catalogue and Release Advice are available from any ABS office.

UNPUBLISHED STATISTICS

27 As well as the statistics included in this and related publications, the ABS may have other relevant unpublished data available. Inquiries should be made to Lee Taylor on 02 6252 8100

FOR MORE INFORMATION . . .

<i>INTERNET</i>	www.abs.gov.au the ABS web site is the best place to start for access to summary data from our latest publications, information about the ABS, advice about upcoming releases, our catalogue, and Australia Now—a statistical profile.
<i>LIBRARY</i>	A range of ABS publications is available from public and tertiary libraries Australia-wide. Contact your nearest library to determine whether it has the ABS statistics you require, or visit our web site for a list of libraries.
<i>CPI INFOLINE</i>	For current and historical Consumer Price Index data, call 1902 981 074 (call cost 77c per minute).
<i>DIAL-A-STATISTIC</i>	For the latest figures for National Accounts, Balance of Payments, Labour Force, Average Weekly Earnings, Estimated Resident Population and the Consumer Price Index call 1900 986 400 (call cost 77c per minute).

INFORMATION SERVICE

Data that is already published and can be provided within five minutes is free of charge. Our information consultants can also help you to access the full range of ABS information—ABS user pays services can be tailored to your needs, time frame and budget. Publications may be purchased. Specialists are on hand to help you with analytical or methodological advice.

<i>PHONE</i>	1300 135 070
<i>EMAIL</i>	client.services@abs.gov.au
<i>FAX</i>	1300 135 211
<i>POST</i>	Client Services, ABS, GPO BOX 796, Sydney NSW 1041

WHY NOT SUBSCRIBE?

ABS subscription services provide regular, convenient and prompt deliveries of ABS publications and products as they are released. Email delivery of monthly and quarterly publications is available.

<i>PHONE</i>	1300 366 323
<i>EMAIL</i>	subscriptions@abs.gov.au
<i>FAX</i>	03 9615 7848
<i>POST</i>	Subscription Services, ABS, GPO BOX 2796Y, Melbourne Vic 3001



2642600003012

ISSN 1444 125X

RRP \$17.50